

JUN 19 - 25, 2023

The Brooklyn luxury real estate market, defined as all properties priced \$2M and above, saw 26 contracts signed this week, made up of 8 condos, 1 coop, and 17 houses. The previous week saw 20 deals. For more information or data, please reach out to a Compass agent.

\$2,995,404

Average Asking Price

\$2,587,500

Median Asking Price

\$1,258

Average PPSF

0%

Average Discount

\$77,880,500

Total Volume

130

Average Days On Market

35 Remsen Street in Brooklyn Heights entered contract this week, with a last asking price of \$8,500,000. This five-story townhouse spans 7,080 square feet with 7 beds and 3 full baths. It features a 25-foot-wide footprint, high ceilings, stained glass transoms, plaster moldings and ceiling medallions, inlaid wood floors, a sweeping staircase, floor-to-ceiling windows, skylights, a triple parlor, an elegant garden, and much more.

Also signed this week was 355 Carlton Avenue in Fort Greene, with a last asking price of \$4,500,000. This townhouse spans nearly 3,200 square feet with 4 beds and 4 full baths. It features a recent renovation, hardwood floors, central heating and cooling, high ceilings, a custom kitchen with floor-to-ceiling white cabinetry, a wall of windows leading to the landscaped garden and bluestone patio, a top-floor primary bedroom with en-suite marble bathroom, an lpe roof deck, and much more.

8

Condo Deal(s)

1

Co-op Deal(s)

17

Townhouse Deal(s)

\$2,648,125

Average Asking Price

\$2,299,000

Average Asking Price

\$3,199,795

Average Asking Price

\$2,637,500

Median Asking Price

\$2,299,000

Median Asking Price

\$2,650,000

Median Asking Price

\$1,578

Average PPSF

\$1,393

Average PPSF

\$1,078

Average PPSF

1,728

Average SqFt

1,650

Average SqFt

2,995

Average SqFt



35 REMSEN ST

Brooklyn Heights

Type	Townhouse	Status	Contract	Ask	\$8,500,000
SqFt	7,080	Beds	7	Baths	3.5
PPSF	\$1,201	Fees	\$3,280	DOM	448



355 CARLTON AVE

Fort Greene

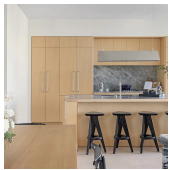
Type	Townhouse	Status	Contract	Ask	\$4,500,000
SqFt	N/A	Beds	4	Baths	4.5
PPSF	N/A	Fees	\$1,415	DOM	35



61 SUMMIT ST

Columbia St Waterfront District

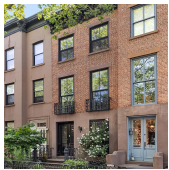
Type	Townhouse	Status	Contract	Ask	\$4,250,000
SqFt	3,541	Beds	4	Baths	4.5
PPSF	\$1,201	Fees	\$697	DOM	90



30 FRONT ST #24D

Dumbo

Type	Condo	Status	Contract	Ask	\$3,500,000
SqFt	1,485	Beds	2	Baths	2
PPSF	\$2,357	Fees	\$2,738	DOM	352



53 TOMPKINS PL

Cobble Hill

Type	Townhouse	Status	Contract	Ask	\$3,495,000
SqFt	2,956	Beds	4	Baths	3.5
PPSF	\$1,183	Fees	\$1,106	DOM	15



264 WAVERLY AVE

Clinton Hill

Type	Townhouse	Status	Contract	Ask	\$3,429,000
SqFt	N/A	Beds	4	Baths	3
PPSF	N/A	Fees	N/A	DOM	56

Compass is a licensed real estate broker and abides by Equal Housing Opportunity laws. All material presented herein is intended for informational purposes only. Information is compiled from sources deemed reliable but is subject to errors, omissions, changes in price, condition, sale, or withdrawal without notice. No statement is made as to the accuracy of any description. All measurements and square footages are approximate. This is not intended to solicit property already listed. Nothing herein shall be construed as legal, accounting or other professional advice outside the realm of real estate brokerage.



29A CARROLL ST

Columbia St Waterfront District

Type	Townhouse	Status	Contract
Sqft	2,986	Beds	4
PPSF	\$1,148	Fees	\$1,490

Ask	\$3,425,000
Baths	3.5
DOM	139



111 WINDSOR PL

Park Slope

Type	Townhouse	Status	Contract
Sqft	1,884	Beds	4
PPSF	\$1,726	Fees	\$619

Ask	\$3,250,000
Baths	2.5
DOM	54

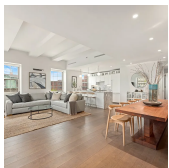


160 IMLAY ST #6B1

Red Hook

Type	Condo	Status	Contract
Sqft	2,757	Beds	2
PPSF	\$1,107	Fees	\$4,499

Ask	\$3,050,000
Baths	3
DOM	508

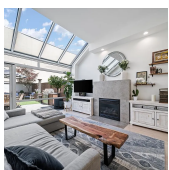


75 GREENE AVE #5B

Fort Greene

Type	Condo	Status	Contract
Sqft	1,740	Beds	3
PPSF	\$1,725	Fees	\$4,000

Ask	\$3,000,000
Baths	2.5
DOM	24

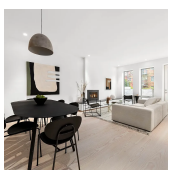


149 NORTH 3RD ST

Williamsburg

Type	Townhouse	Status	Contract
Sqft	1,900	Beds	3
PPSF	\$1,553	Fees	\$1,082

Ask	\$2,950,000
Baths	2
DOM	21



89 DOUGLASS ST #1

Boerum Hill

Type	Condo	Status	Contract
Sqft	1,894	Beds	2
PPSF	\$1,452	Fees	\$1,840

Ask	\$2,750,000
Baths	2.5
DOM	35

Compass is a licensed real estate broker and abides by Equal Housing Opportunity laws. All material presented herein is intended for informational purposes only. Information is compiled from sources deemed reliable but is subject to errors, omissions, changes in price, condition, sale, or withdrawal without notice. No statement is made as to the accuracy of any description. All measurements and square footages are approximate. This is not intended to solicit property already listed. Nothing herein shall be construed as legal, accounting or other professional advice outside the realm of real estate brokerage.



610 WILLOUGHBY AVE

Bedford Stuyvesant

Type	Townhouse	Status	Contract
Sqft	3,380	Beds	7
PPSF	\$785	Fees	\$492

Ask	\$2,650,000
Baths	3.5
DOM	19



11 HOYT ST #55C

Downtown Brooklyn

Type	Condo	Status	Contract
Sqft	1,554	Beds	3
PPSF	\$1,625	Fees	\$4,015

Ask	\$2,525,000
Baths	2.5
DOM	31

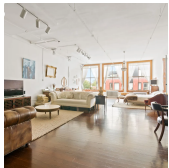


985 LORIMER ST

Greenpoint

Type	Townhouse	Status	Contract
Sqft	1,520	Beds	5
PPSF	\$1,446	Fees	\$526

Ask	\$2,498,500
Baths	2
DOM	269

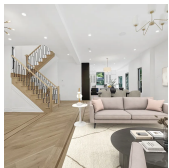


705 DRIGGS AVE #10

Williamsburg

Type	Coop	Status	Contract
Sqft	1,650	Beds	1
PPSF	\$1,393	Fees	\$461

Ask	\$2,299,000
Baths	1
DOM	42

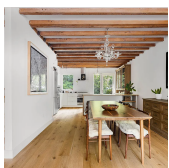


686 EAST 24TH ST

South Midwood

Type	Multihouse	Status	Contract
Sqft	3,200	Beds	5
PPSF	\$704	Fees	\$600

Ask	\$2,250,000
Baths	3
DOM	N/A



137A MASPETH AVE

East Williamsburg

Type	Townhouse	Status	Contract
Sqft	1,569	Beds	3
PPSF	\$1,435	Fees	\$398

Ask	\$2,250,000
Baths	2
DOM	25

Compass is a licensed real estate broker and abides by Equal Housing Opportunity laws. All material presented herein is intended for informational purposes only. Information is compiled from sources deemed reliable but is subject to errors, omissions, changes in price, condition, sale, or withdrawal without notice. No statement is made as to the accuracy of any description. All measurements and square footages are approximate. This is not intended to solicit property already listed. Nothing herein shall be construed as legal, accounting or other professional advice outside the realm of real estate brokerage.



1063 STERLING PL

Crown Heights

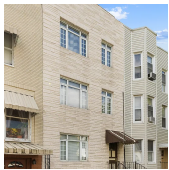
Type	Townhouse	Status	Contract	Ask	\$2,250,000
Sqft	3,580	Beds	6	Baths	3
PPSF	\$628	Fees	\$524	DOM	22



575 4TH AVE #PHA

Park Slope

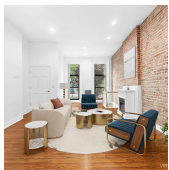
Type	Condo	Status	Contract	Ask	\$2,210,000
Sqft	1,597	Beds	3	Baths	2
PPSF	\$1,384	Fees	\$3,258	DOM	221



121 ECKFORD ST

Greenpoint

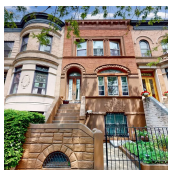
Type	Townhouse	Status	Contract	Ask	\$2,200,000
Sqft	2,476	Beds	6	Baths	3
PPSF	\$889	Fees	\$393	DOM	29



654 LAFAYETTE AVE

Bedford Stuyvesant

Type	Townhouse	Status	Contract	Ask	\$2,200,000
Sqft	3,648	Beds	6	Baths	4.5
PPSF	\$603	Fees	\$290	DOM	357



145 MIDWOOD ST

Prospect Lefferts Gardens

Type	Townhouse	Status	Contract	Ask	\$2,200,000
Sqft	2,764	Beds	5	Baths	1.5
PPSF	\$796	Fees	\$640	DOM	24



11 HOYT ST #53C

Downtown Brooklyn

Type	Condo	Status	Contract	Ask	\$2,100,000
Sqft	1,369	Beds	2	Baths	2.5
PPSF	\$1,534	Fees	\$3,538	DOM	N/A

Compass is a licensed real estate broker and abides by Equal Housing Opportunity laws. All material presented herein is intended for informational purposes only. Information is compiled from sources deemed reliable but is subject to errors, omissions, changes in price, condition, sale, or withdrawal without notice. No statement is made as to the accuracy of any description. All measurements and square footages are approximate. This is not intended to solicit property already listed. Nothing herein shall be construed as legal, accounting or other professional advice outside the realm of real estate brokerage.

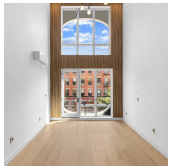


430 QUINCY ST

Type	Townhouse	Status	Contract
Sqft	2,433	Beds	5
PPSF	\$863	Fees	\$270

Bedford Stuyvesant

Ask	\$2,099,000
Baths	3
DOM	265



251 ST MARKS AVE #3A

Type	Condo	Status	Contract
Sqft	1,425	Beds	2
PPSF	\$1,439	Fees	\$1,044

Prospect Heights

Ask	\$2,050,000
Baths	2
DOM	17

Compass is a licensed real estate broker and abides by Equal Housing Opportunity laws. All material presented herein is intended for informational purposes only. Information is compiled from sources deemed reliable but is subject to errors, omissions, changes in price, condition, sale, or withdrawal without notice. No statement is made as to the accuracy of any description. All measurements and square footages are approximate. This is not intended to solicit property already listed. Nothing herein shall be construed as legal, accounting or other professional advice outside the realm of real estate brokerage.